

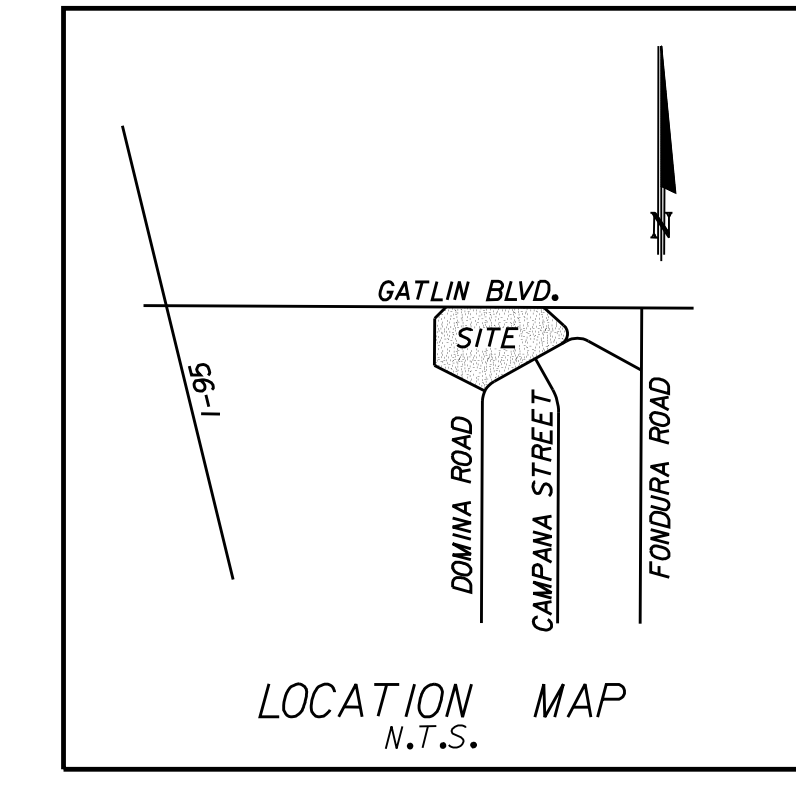
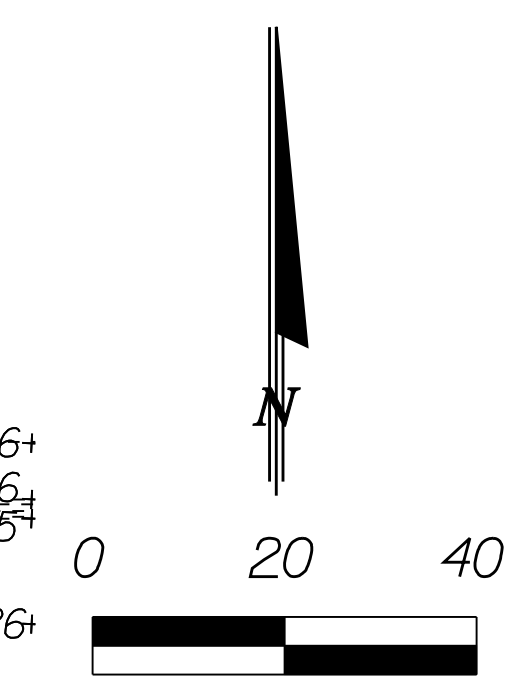
**LEGAL DESCRIPTION:**

GATLIN BOULEVARD CENTER PARCEL 1 AND PARCEL 2, AS RECORDED IN PLAT BOOK 58, PAGES 20 AND 21 PUBLIC RECORDS OF ST. LUCIE COUNTY, FLORIDA.

CONTAINING 2.10 ACRES MORE OR LESS.

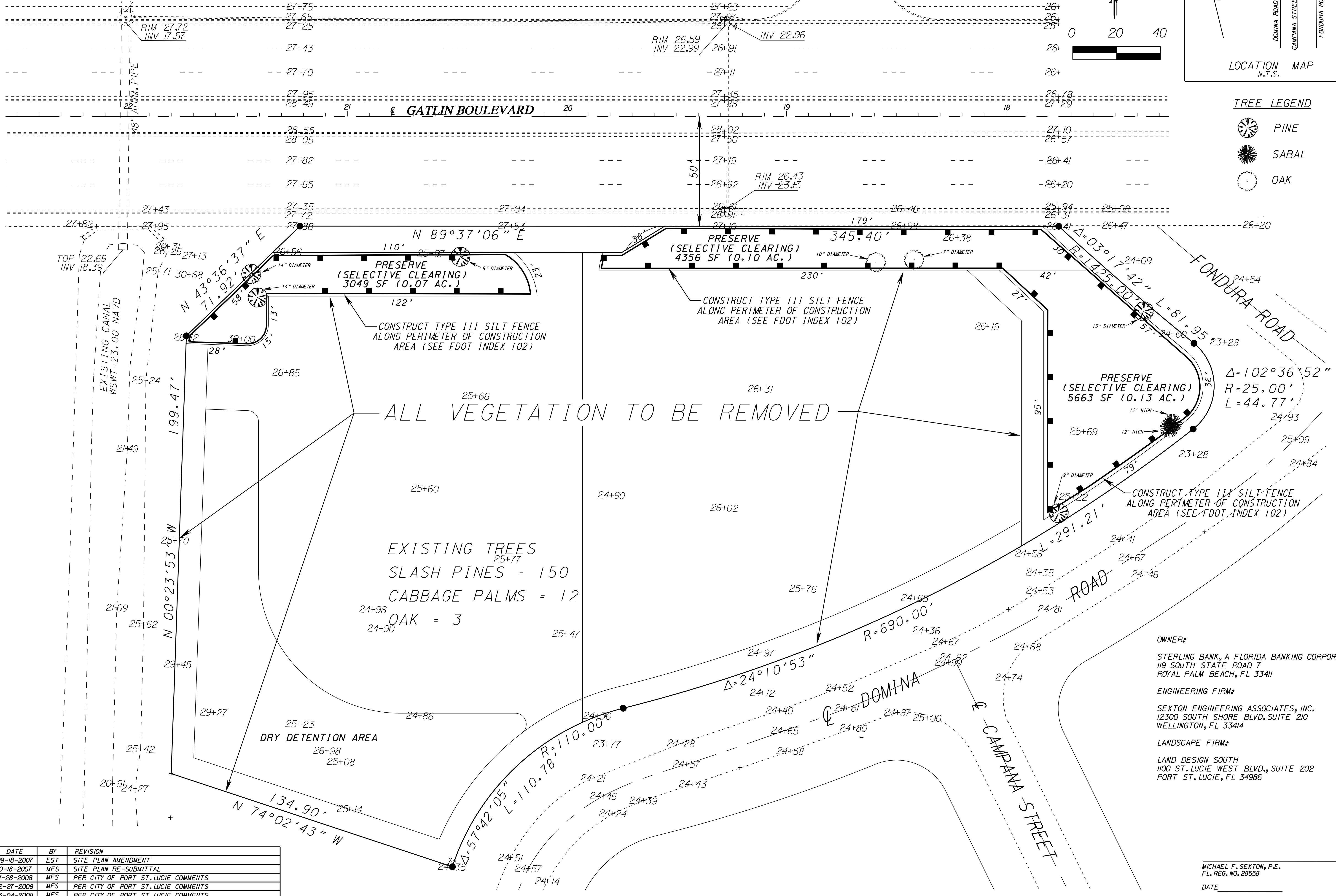
**NOTE:**

VEGETATION IN PRESERVE AREAS TO BE RETAINED, SURVEYED AND ROPED OFF PRIOR TO APPLYING FOR BUILDING PERMIT.



**TREE LEGEND**

- PINE
- SABAL
- OAK



DATE	BY	REVISION
09-18-2007	EST	SITE PLAN AMENDMENT
10-18-2007	MFS	SITE PLAN RE-SUBMITTAL
01-28-2008	MFS	PER CITY OF PORT ST. LUCIE COMMENTS
02-27-2008	MFS	PER CITY OF PORT ST. LUCIE COMMENTS
03-04-2008	MFS	PER CITY OF PORT ST. LUCIE COMMENTS

**OWNER:**  
STERLING BANK, A FLORIDA BANKING CORPORATION  
119 SOUTH STATE ROAD 7  
ROYAL PALM BEACH, FL 33411

**ENGINEERING FIRM:**  
SEXTON ENGINEERING ASSOCIATES, INC.  
12300 SOUTH SHORE BLVD. SUITE 210  
WELLINGTON, FL 33414

**LANDSCAPE FIRM:**  
LAND DESIGN SOUTH  
1100 ST. LUCIE WEST BLVD., SUITE 202  
PORT ST. LUCIE, FL 34986

MICHAEL F. SEXTON, P.E.  
FL. REG. NO. 28558  
DATE \_\_\_\_\_

**SEXTON ENGINEERING ASSOCIATES, INC.**

CONSULTING ENGINEERS AND SURVEYORS  
12300 SOUTH SHORE BOULEVARD, SUITE 210  
WELLINGTON, FLORIDA 33414  
PHONE 561-792-3122 FAX 561-792-3168  
ENGINEERING BUSINESS NO. 7884

**GATLIN BOULEVARD CENTER  
FOR STERLING BANK  
PORT ST. LUCIE, FLORIDA**

CITY OF PORT ST. LUCIE  
PROJECT NO. POT-279

**LAND CLEARING PLAN**

PROJ. NO. 1395  
SCALE 1"=20'  
DATE 07/31/2007  
SHEET 3 OF 12