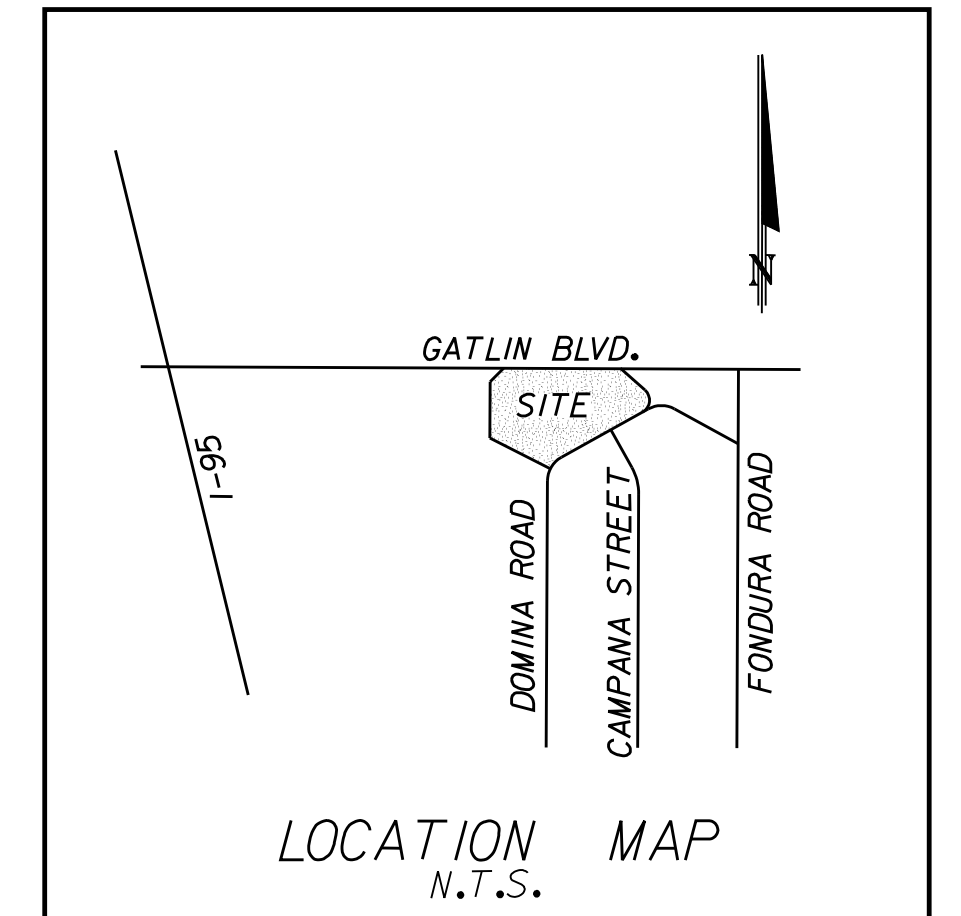


SEXTON ENGINEERING ASSOCIATES, INC.

12300 SOUTH SHORE BOULEVARD, SUITE 210
 WELLINGTON, FLORIDA 33414
 TELEPHONE (561)-792-3122

GATLIN BOULEVARD CENTER FOR STERLING BANK

PORT. ST. LUCIE, FLORIDA



PLAN INDEX

SHEET NO.	SHEET DESCRIPTION
1	COVER SHEET
2	STORMWATER & POLLUTION PREVENTION PLAN
3	LAND CLEARING PLAN
4	PAVING & DRAINAGE PLAN
5	GATLIN BOULEVARD AND DOMINA ROAD TYPICAL SECTION & DRIVEWAY PROFILE
6	GATLIN BOULEVARD PLAN & PROFILE
7	TYPICAL SECTIONS & GENERAL NOTES
8	SIGNING & MARKING PLAN
9	PAVING & DRAINAGE DETAILS
10	WATER & SEWER PLAN
11	POTABLE WATER DETAILS
12	WASTEWATER DETAILS

THESE PLANS HAVE BEEN PREPARED
 IN ACCORDANCE WITH THE STATE OF
 FLORIDA DEPARTMENT OF TRANSPORTATION
 ROADWAY AND TRAFFIC DESIGN STANDARDS,
 CITY OF PORT ST. LUCIE UNIFIED
 LAND DEVELOPMENT CODE AND
 PORT ST. LUCIE UTILITY SYSTEMS
 DEPARTMENT (PSLUSD) STANDARDS 2007.

OWNER:
 STERLING BANK
 119 S. STATE ROAD 7
 ROYAL PALM BEACH, FL 33414
 PHONE # (561) 615-1650

ATTENTION IS DIRECTED TO THE FACT THAT
 THESE PLANS MAY HAVE BEEN ALTERED IN
 SIZE BY REPRODUCTION. THIS MUST BE
 CONSIDERED WHEN OBTAINING SCALED DATA.

THESE PLANS AND SPECIFICATIONS ARE NOT
 VALID WITHOUT THE ORIGINAL SIGNATURE AND
 ORIGINAL RAISED SEAL OF A STATE OF FLORIDA
 LICENSED PROFESSIONAL ENGINEER.

DATE	BY	REVISION
09-18-2007	EST	SITE PLAN AMENDMENT
10-18-2007	MFS	SITE PLAN RE-SUBMITTAL
01-28-2008	MFS	PER CITY OF PORT ST. LUCIE COMMENTS
02-27-2008	MFS	PER CITY OF PORT ST. LUCIE COMMENTS
03-04-2008	MFS	PER CITY OF PORT ST. LUCIE COMMENTS

ENGINEER OF RECORD: _____
 FL. REG. NO. 28558
 DATE: _____
 ENG. BUSINESS NO. 7864

CITY OF PORT ST. LUCIE
 PROJECT NO. P07-279